



PARTS LIST FOR
CW-4004-5MVO

Engine Oil Grade:	Above 40°F=SAE 30 Below 40°F=SAE10W-30
Engine Oil Capacity:	56 oz.
Pump Oil Grade:	Mi-T-M Pump Oil #AW-4085-0016
Pump Oil Capacity:	40.6 oz.
Nozzle Size:	4.0

This Parts Listing has been compiled for your benefit. You can be assured your Mi-T-M Cold Water Pressure Washer was constructed and designed with quality and performance in mind using over 25 years experience in the pressure washer business. Each component has been rigorously tested to insure the highest level of acceptance.

The contents of this Parts Listing are based on the latest product information available at the time of publication. Mi-T-M reserves the right to make changes in price, color, materials, equipment, specifications or models at any time without notice.

WARNING

THIS IS A PROFESSIONAL HIGH PRESSURE, COLD WATER PRESSURE WASHER. CAUTION SHOULD BE OBSERVED WHEN USING OR REPAIRING THIS UNIT! READ AND FOLLOW THE SAFETY WARNINGS LISTED BELOW BEFORE ATTEMPTING ANY REPAIRS ON THIS PRESSURE WASHER!

SAFETY WARNINGS

1. NEVER alter or modify the equipment. Be sure any accessory items and system components being used will withstand the pressure developed. Use only genuine Mi-T-M parts for repair of your pressure washer. Failure to do so can cause hazardous operating conditions and will VOID warranty.
2. NEVER make adjustments on machinery while the unit is connected to the engine without first removing the ignition cables from the spark plugs. Turning over the machinery by hand during adjustment or cleaning might start the machinery, causing serious injury to the operator.
3. Know how to stop and bleed pressures quickly. Be thoroughly familiar with controls.
4. Before servicing the unit, turn unit off, relieve the water pressure and allow the unit to cool down. Do not make repairs while the unit is running. Service in a clean, dry, flat area.
5. After testing the machine, DO NOT leave the pressurized unit unattended. Shut off the unit and release trapped pressure before leaving.

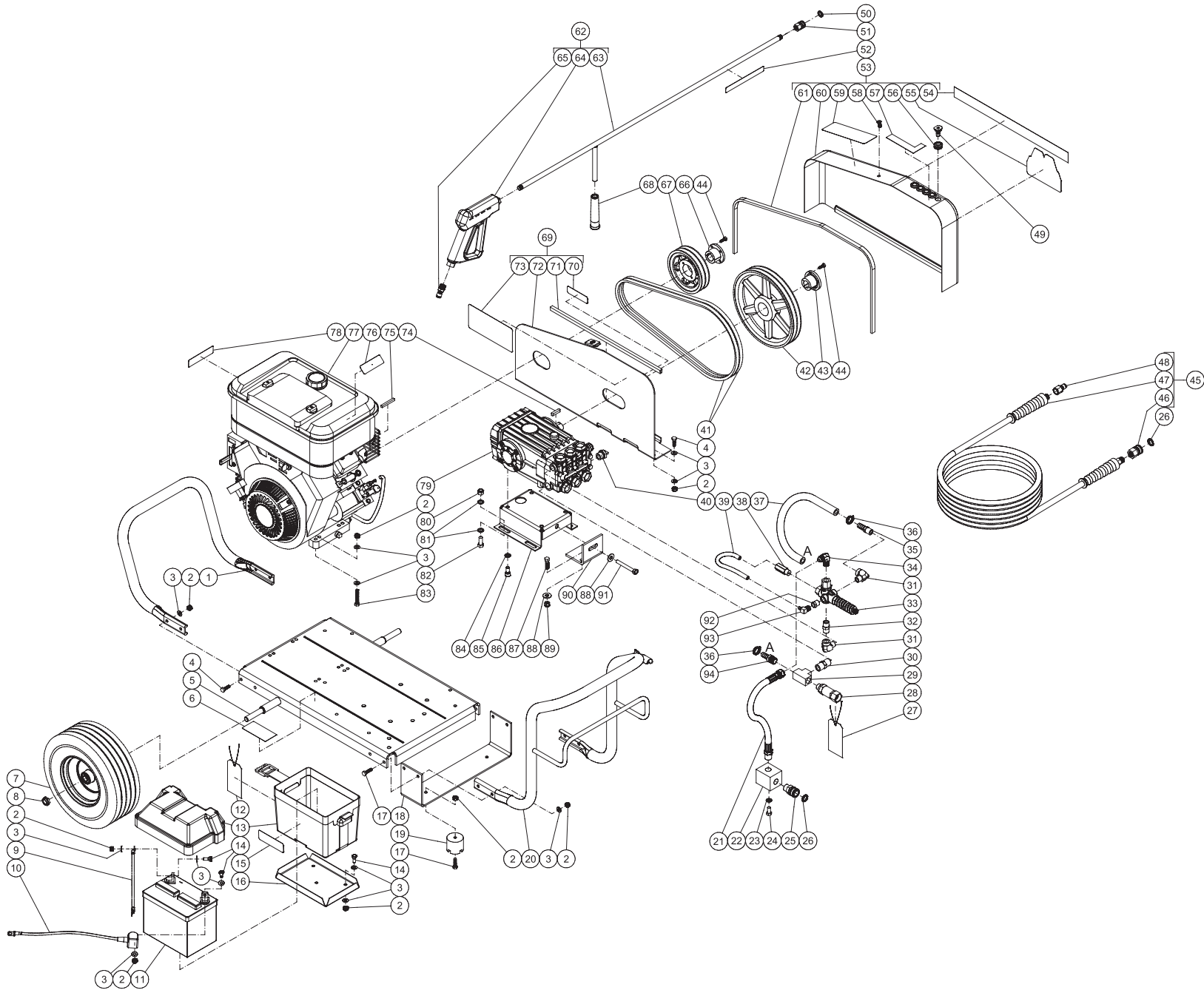
Table of Contents

SPECIFICATIONS	3
FRAME ASSEMBLY FOR CW-4004-5MV0	4
PUMP ASSEMBLY (3-0075)	6
UNLOADER ASSEMBLY (8-0634)	8

SPECIFICATIONS

MODEL NUMBER	CW-4004-5MV0
Operating Pressure (PSI/Bar):	4000/275.8
High Pressure Nozzle:	4.0
Water Volume (GPM/lpm):	4.0/15.1
Engine:	Briggs & Stratton
Model	3054
Engine Type	Four Stroke, Overhead Valve, Single Cylinder
Oil Type	Above 40°F=SAE 30/Below 40°F=SAE10W-30
Oil Capacity (oz./liter)	56/1.7
Low Oil Protection	Oil Guard™
Fuel Type	Unleaded Gasoline 86 Octane Minimum
Fuel Capacity (gal./liter)	2.25/8.5
Starting	Recoil Rope
Maximum No Load RPM	3600 (+/- 100)
Pump:	Direct Driven, Oil Bath, Triplex Piston
Oil Type	Mi-T-M Pump Oil #AW-4085-0016
Oil Capacity (oz./liters)	40.6/1.2
Plungers	Ceramic Coated
Manifold	Forged Brass
Valves	Stainless Steel
Unloader	Preset
Heat Dump Valve	Relieves heated water during unloader bypass stage
Detergent Injector	Adjustable low pressure down stream from pump
Unit Net Weight (lbs/Kg)	249/113
Unit Shipping Weight (lbs/Kg)	327/148
Unit Net Dimension (in/cm)	46Lx28Wx30H/ 117Lx71Wx76H
Unit Shipping Dimension (in/cm)	49Lx30.5Wx35.5H/ 124Lx77.5Wx90H

FRAME ASSEMBLY FOR CW-4004-5MV0



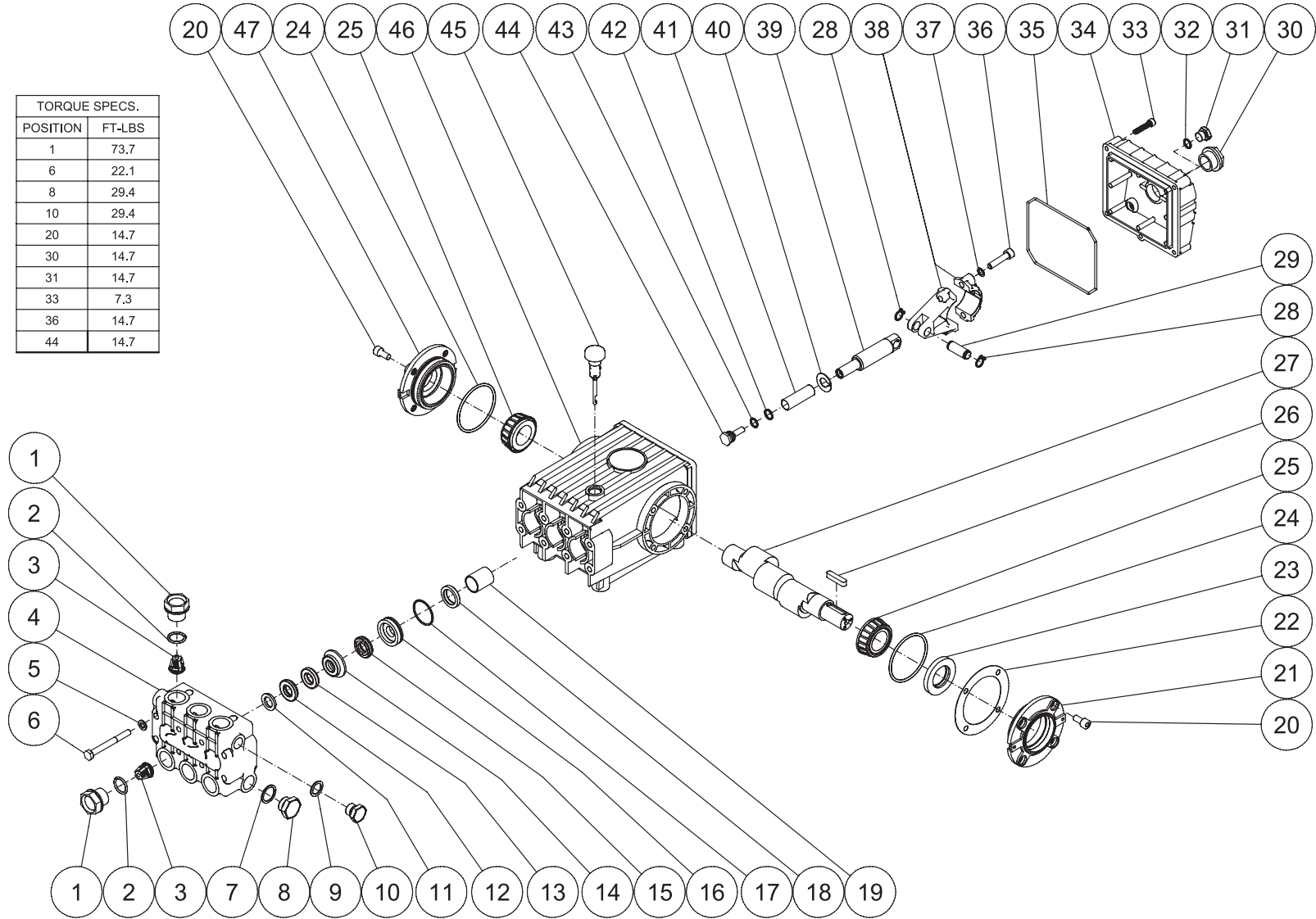
CW-4004-5MV0 110614 RJJA

FRAME ASSEMBLY							
ITEM	DESCRIPTION	PART #	QTY	ITEM	DESCRIPTION	PART #	QTY
1	REAR TUBING HANDLE 1 1/4" 14GA	7-0176	1	49	NOZZLE 00040 QC	18-0397	1
2	LOCKNUT	30-0157	22	-	NOZZLE 15040 QC	18-0399	1
3	WASHER	28-0003	32	-	NOZZLE 25040 QC	18-0400	1
4	BOLT	27-0067	8	-	NOZZLE 40040 QC	18-0401	1
5	BASEPLATE	5-0078A01	1	50	O-RING	25-0122	1
6	DECAL- SILVER STICKER	N/A	1	51	QUICK CONNECT	17-0001	1
7	WHEEL	14-0127	2	52	DECAL - RISK OF INJECTION (SEE 71-1039)	N/A	1
8	LOCKNUT	30-0117	2	53	BELTGUARD COVER ASSY-MEDIUM (INC 54-61)	851-0218	1
9	CABLE	32-9111	1	54	DECAL - Mi-T-M STRIPE (SEE 71-1039)	N/A	1
10	CABLE	32-9112	1	55	DECAL - Mi-T-M	N/A	1
11	BATTERY	32-0058	1	56	GROMMET	33-0001	5
12	TAG	34-0096	1	57	DECAL - NOZZLE	N/A	1
13	BATTERY BOX	33-0092	1	58	FASTENER	33-0197	1
14	BOLT	27-0066	4	59	DECAL - OPERATION (SEE 71-1039)	N/A	1
15	DECAL - RISK OF INJURY (SEE 71-1039)	N/A	1	60	BELTGUARD COVER	N/A	1
16	BATTERY RETAINER	20-0264A01	1	61	EDGING *(FOUR FEET REQUIRED)	33-0020	1
17	BOLT	27-0068	6	62	GUN, BLACK WAND GRIP W/QC (INC 63-65)	851-0371	1
18	UNDERBRACKET	13-0137A01	1	63	WAND (INC GRIP & QC)	16-0439	1
19	ISOLATOR	14-0008	2	64	GUN	16-0001	1
20	HANDLE	7-0174A01	1	65	QUICK CONNECT	17-0005	1
21	HOSE	15-0141	1	66	BUSHING	9-0005	1
22	MANIFOLD BLOCK	51-0012	1	67	SHEAVE	10-0064	1
23	LOCKWASHER	29-0008	2	68	GRIP	7-0002	1
24	BOLT	27-0116	2	69	BELTGUARD BACK ASSEMBLY-MEDIUM (INC 70-73)	851-0215	1
25	QUICK CONNECT SOCKET	17-0029	1	70	DECAL - WARNING (SEE 71-1039)	N/A	1
26	O-RING	25-0123	2	71	EDGING *(TWO FEET REQUIRED)	33-0020	1
27	TAG - WATER SUPPLY INLET (E)	34-0097	1	72	BELTGUARD BACK	N/A	1
28	FILTER	19-0206	1	73	DECAL - WARNING (SEE 71-1039)	N/A	1
29	TEE	23-0043	1	74	KEY	43-0048	1
30	NIPPLE	23-0012	1	75	KEY	43-0078	1
31	ELBOW	24-0105	2	76	DECAL - RISK OF FIRE (SEE 71-1039)	N/A	1
32	NIPPLE	24-0010	1	77	VANGUARD ENGINE ASSY	851-0099	1
33	UNLOADER	8-0634	1	78	DECAL - RISK OF BURNS (SEE 71-1039)	N/A	1
34	ELBOW	24-0092	1	79	PUMP	3-0075	1
35	HOSE BARB	23-0105	1	80	LOCKNUT	30-0161	4
36	HOSE CLAMP	42-0011	2	81	WASHER	28-0030	8
37	HOSE	15-0022	1	82	BOLT	27-0166	4
38	EASY START VALVE	22-0242	1	83	BOLT	27-0071	4
39	HOSE	15-0140	1	84	LOCKWASHER	29-0055	4
40	RELIEF VALVE	22-0005	1	85	BOLT	27-8471	4
41	BELT	11-0089	2	86	PUMP BRACKET	5-0101A01	1
42	SHEAVE	10-0040	1	87	BOLT	27-0118	2
43	BUSHING	9-0017	1	88	WASHER	28-0023	3
44	BOLT	27-0015	4	89	LOCKNUT	30-0159	2
45	ASSY HOSE W/QC 4500 PSI (INC 46-48)	851-0006	1	90	BRACKET	13-0003A01	1
46	QC SOCKET	17-0004	1	91	BOLT	27-0576	1
47	HOSE	15-0004	1	92	REDUCER	23-0017	1
48	QUICK CONNECT	17-0006	1	93	ELBOW	23-0237	1
				94	BARB	23-0045	1
				-	DECAL SET	71-1039	1

*MUST ORDER IN ONE FOOT LENGTHS

PUMP ASSEMBLY (3-0075)

TORQUE SPECS.	
POSITION	FT-LBS
1	73.7
6	22.1
8	29.4
10	29.4
20	14.7
30	14.7
31	14.7
33	7.3
36	14.7
44	14.7



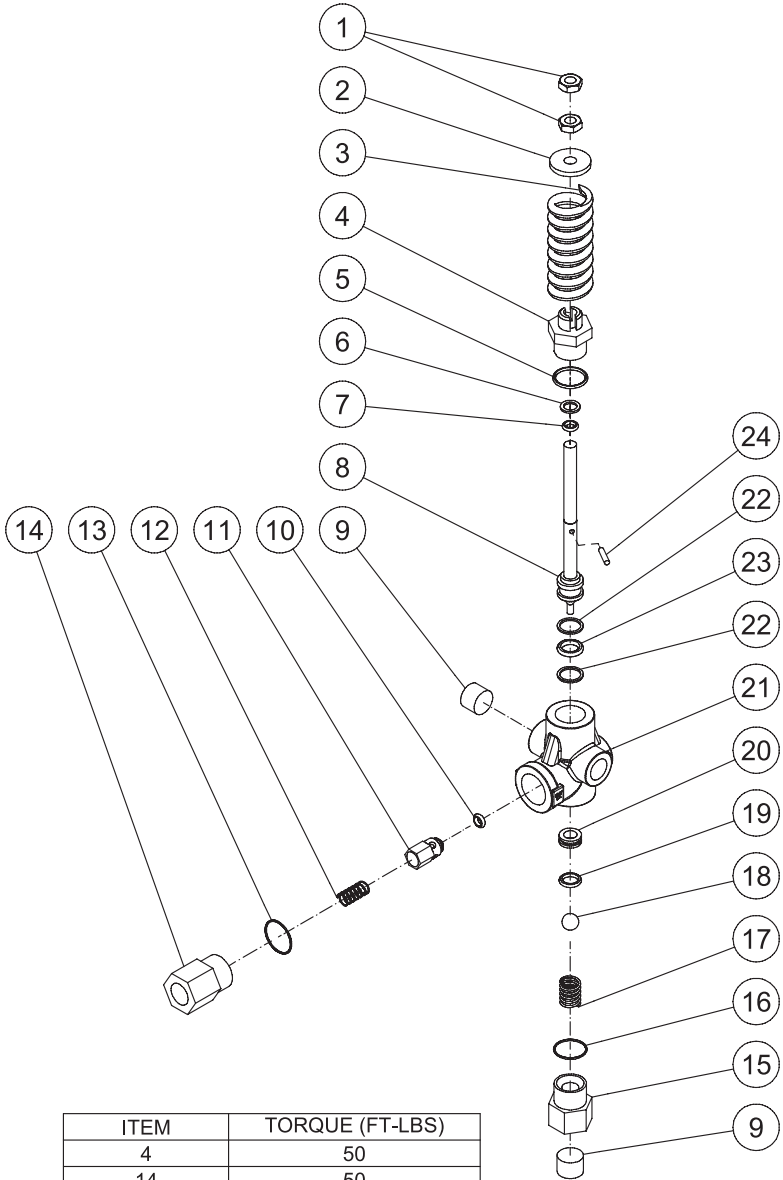
3-0075-032510-AJH

PUMP ASSEMBLY

ITEM	DESCRIPTION	PART #	QTY	ITEM	DESCRIPTION	PART #	QTY
1	CAP VALVE	46-0282	6	25	BEARING	48-0012	2
2	O-RING	25-0012	6	26	KEY	43-0048	1
3	VALVE (SEE KIT 70-0009)	-	6	27	CRANKSHAFT	46-0050	1
4	MANIFOLD	46-0291	1	28	RETAINING RING	46-0103	6
5	WASHER	28-1039	8	29	CONNECTING ROD PIN	43-0032	3
6	BOLT	27-8185	8	30	OIL LEVEL INDICATOR	46-0114	1
7	WASHER	28-1038	2	31	PLUG	39-0017	1
8	PLUG	39-0019	2	32	O-RING	25-0014	1
9	WASHER	28-1002	2	33	BOLT	27-8404	5
10	PLUG	39-0018	2	34	CRANKCASE OPEN COVER	46-0295	1
11	HEAD RING (SEE KIT 70-0031 AND 852-0064)	70-0031	3	35	O-RING	25-0339	1
12	PACKING (SEE KIT 70-0042 AND 852-0064)	46-0338	3	36	BOLT	27-8435	6
13	LONG LIFE RING (SEE KIT 70-0042 AND 852-0064)	46-0290	3	37	LOCKWASHER	29-0154	6
14	INTERMEDIATE RING (SEE KIT 70-0210)	46-0289	3	38	CONNECTING ROD	46-0051	3
15	V-PACKING (SEE KIT 70-0042 AND 852-0064)	46-0287	3	39	PISTON GUIDE	46-0294	3
16	PACKING RETAINER	46-0286	3	40	SLINGER WASHER	46-0283	3
17	O-RING (SEE KIT 852-0064)	25-0015	3	41	CERAMIC PLUNGER	46-0337	3
18	OIL SEAL	26-0047	3	42	RING	25-0137	3
19	BUSHING	9-0029	3	43	O-RING	25-0138	2
20	BOLT	27-8431	8	44	PISTON SCREW	46-0285	3
21	CRANKCASE COVER	46-0296	1	45	OIL DIP STICK	46-0144	1
22	SHIM	46-0113	1	46	CRANKCASE	46-0047	1
23	OIL SEAL	26-0049	1	47	CRANKCASE COVER	46-0336	1
24	O-RING	25-0013	2				

Mi-T-M KIT #	DESCRIPTION	ITEMS	# OF ASSEMBLIES	# OF CYLINDERS
70-0009	KITS -VALVES	3	6	3
70-0031	KITS -HEAD RING	11	3	3
70-0042	KITS - V-PACKING	12, 13, 15	3	3
70-0210	KITS -INTERMEDIATE RETAINER	14	3	3
852-0064	V-PACKING ASSY	11, 12, 13, 15, 17	3	3

UNLOADER ASSEMBLY (8-0634)



ITEM	TORQUE (FT-LBS)
4	50
14	50
15	50

8-0634 052213 JDK			
UNLOADER ASSEMBLY			
ITEM	DESCRIPTION	PART #	QTY
1	NUT	8-0293	2
2	SPRING SPACER	46-1527	1
3	SPRING	49-0171	1
4	FITTING	46-1529	1
5	O-RING (SEE KIT 70-0625)	SEE KIT	1
6	O-RING (SEE KIT 70-0625)	SEE KIT	1
7	O-RING (SEE KIT 70-0625)	SEE KIT	1
8	STEM	46-1530	1
9	PLUG	23-0244	2
10	O-RING (SEE KIT 70-0624)	SEE KIT	1
11	POPPET (SEE KIT 70-0624)	SEE KIT	1
12	SPRING (SEE KIT 70-0624)	SEE KIT	1
13	O-RING	25-0672	1
14	OUTLET FITTING	46-1531	1
15	INLET FITTING (SEE KIT 70-0625)	SEE KIT	1
16	O-RING (SEE KIT 70-0625)	SEE KIT	1
17	SPRING	49-0172	1
18	BALL (SEE KIT 70-0625)	SEE KIT	1
19	O-RING (SEE KIT 70-0625)	SEE KIT	1
20	SEAT	46-1532	1
21	FORGING	46-1533	1
22	BACKUP RING (SEE KIT 70-0625)	SEE KIT	2
23	O-RING (SEE KIT 70-0625)	SEE KIT	1
24	PIN (SEE KIT 70-0625)	SEE KIT	1

REPLACEMENT KITS			
KIT #	DESCRIPTION	ITEMS	QTY
70-0624	KIT - CHECK VALVE	10-12	1, 1, 1
70-0625	KIT - UNLOADER REBUILD	5-7, 15-16, 18-19, 22-24	1, 1, 1, 1, 1, 1, 1, 2, 1, 1

Manufactured by Mi-T-M
8650 Enterprise Drive, Peosta IA 52068
563-556-7484/ Fax 563-556-1235